



## District Scale Opportunity in the Wawa Mining Camp

### Golden Sky Project

Underexplored property hosting  
multiple gold structures between  
two active producers

Investor Presentation



# Forward Looking Statements



## Forward Looking Information

This presentation may include certain "forward-looking statements" within the meaning of applicable Canadian securities legislation. All statements, other than statements of historical fact, included herein, including, without limitation, statements regarding future plans and objectives of Angus Ventures Inc. ("the Company"), future opportunities and anticipated goals, the company's portfolio, treasury, management team, timetable to permitting and production and the prospective mineralization of the properties, are forward-looking statements that involve various risks, assumptions, estimates and uncertainties. Generally, forward-looking information can be identified by the use of forward-looking terminology such as "seeks", "believes", "anticipates", "plans", "continues", "budget", "scheduled", "estimates", "expects", "forecasts", "intends", "projects", "predicts", "proposes", "potential", "targets" and variations of such words and phrases, or by statements that certain actions, events or results "may", "will", "could", "would", "should" or "might", "be taken", "occur" or "be achieved". There can be no assurance that such statements will prove to be accurate, and actual results and future events could differ materially from those anticipated in such statements. Forward-looking information is subject to known and unknown risks, including but not limited to: an inability to complete the business combination; general business, economic, competitive, geopolitical and social uncertainties; delays in obtaining or failures to obtain required governmental, regulatory, environmental or other required approval; the actual results of current exploration activities; acquisition risks; and other risks of the mining and resource industry. Although the Company has attempted to identify important factors that could cause actual results to differ materially from those contained in forward-looking information, there may be other factors that cause results not to be as anticipated, estimated or intended. These statements reflect the current internal projections, expectations or beliefs of the Company are based on information currently available to the Company. The Company do not undertake to update any forward-looking information, except in accordance with applicable securities laws. The Company believe that the expectations reflected in those forward-looking statements are reasonable but no assurance can be given that these expectations will prove to be correct and such forward-looking statements included in this presentation should not be unduly relied upon by investors as actual results may vary. Unless required to be updated pursuant to securities laws, these statements speak only as of the date of this presentation and are expressly qualified, in their entirety, by this cautionary statement.

Although the Company has attempted to identify important factors that could cause actual results to differ materially, there may be other factors that cause results not to be as anticipated, estimated or intended. There can be no assurance that such statements will prove to be accurate as actual results and future events could differ materially from those anticipated in such statements. The Company disclaims any intention or obligation to update or revise any forward-looking statements, whether as a result of new information, future events or otherwise, other than as required by applicable law. Accordingly, readers should not place undue reliance on forward-looking statements and trading in securities of the Company should be considered highly speculative. All scientific and technical information contained in this presentation has been prepared by, or under the supervision of, Breanne Beh, vice president of exploration for the Company and a qualified person as defined by NI 43-101, Standards of Disclosure for Mineral Projects.

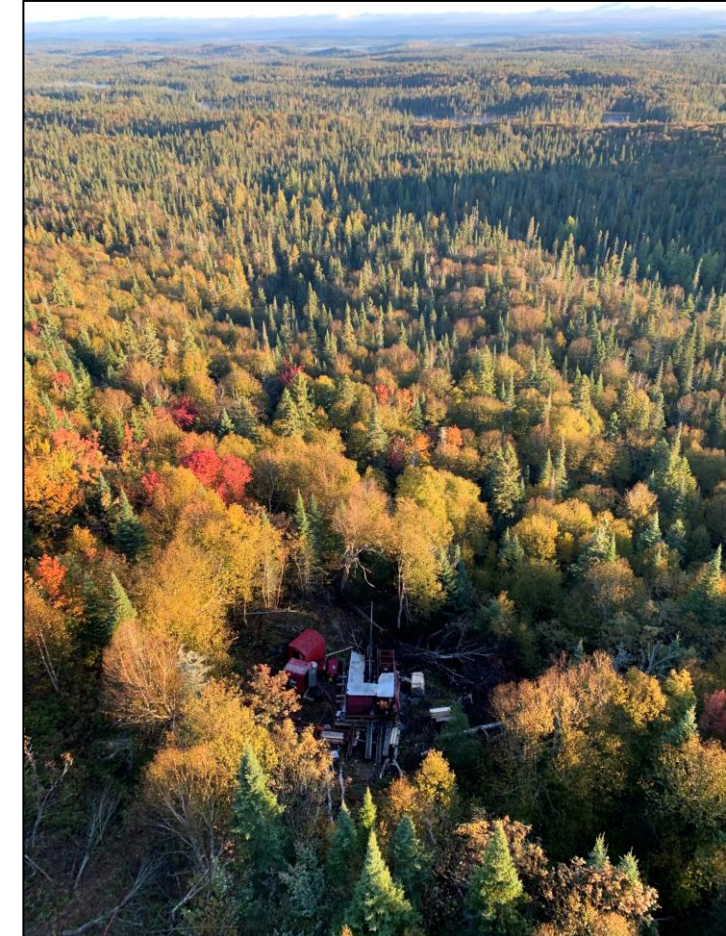
Historical assays contained in this Presentation have not been confirmed by the Company, are of uncertain QA/QC standards and should not be relied upon. They are presented as a guide to future exploration.

## Currency

Unless otherwise indicated, all dollar values herein are in Canadian \$.

# Company Highlights

- ✓ **Experienced leadership team** responsible for two multi-million ounce gold discoveries, Borden Mine (Ontario) and Novador Project (Quebec)
- ✓ **Strategic district-scale land position in a proven Canadian gold district (Wawa, Ontario)**
  - Prolific mining camp, project located between Wesdome and Alamos operating mines
  - 100% owned, 290km<sup>2</sup> district-scale land package, first time it has all been consolidated into one project
  - Underexplored gold project with great access to existing infrastructure
- ✓ **Potential for high-grade, multi-million ounce gold deposits**
  - Area distinguished by multiple, thick, continuous gold zones with potential for high-grade mineralization similar to surrounding mines
  - Two advanced gold targets, including a new discovery by Angus (BIF Zone) and a historical resource (Dorset Zone) as well as multiple new exploration targets identified in 2022 and 2023 regional field programs
  - Ramping up drill programs to target higher grades at BIF and Dorset, as well as testing new areas including the Eagle River Splay Zone
- ✓ **Fully funded treasury with strong shareholder support:**
  - Strategic investment from Wesdome Gold Mines (TSX: WDO) completed in January 2024



## Steve Burleton

### Chair & Director

- 30+ years experience as a senior executive, capital markets, corporate strategy and M&A
- Former CEO of GT Gold, acquired by Newmont for \$456 million in 2021
- Former Vice President of Richmond Mines, acquired by Alamos Gold for \$1 billion in 2017

## Breanne Beh

### President & CEO

- Over 10 years of experience in Gold exploration with producers and junior explorers
- Part of Borden Mine (Ontario) Discovery team
- Managed the 5.2Moz Novador gold project in Quebec

## Jamie Sokalsky

### Strategic Advisor

- Former President & CEO of Barrick Gold (2012-2014)
- Former CFO of Barrick Gold (1999-2012)

## David Palmer

### Director

- Current President & CEO of Probe Gold
- Former President & CEO of Probe Mines, sold to Goldcorp for \$526 million
- Director of Battle North Gold, acquired by Evolution Mining for \$343 million

## Patrick Langlois

### Director

- 20+ years experience in corporate strategy, investment banking and M&A
- CFO of Probe Gold
- Former Vice President of Probe Mines

## Dennis Peterson

### Director

- 30+ years of experience as a corporate securities lawyer in the small cap mining sector
- Founder of Peterson McVicar LLP in Toronto
- Director of Probe Gold

## David Cobbold

### Director

- 25+ years experience in financial services, investment banking and M&A
- Vice-Chairman, Metals & Mining at Macquarie Group
- Former Managing Director Global Mining Investment Banking at CIBC World Markets

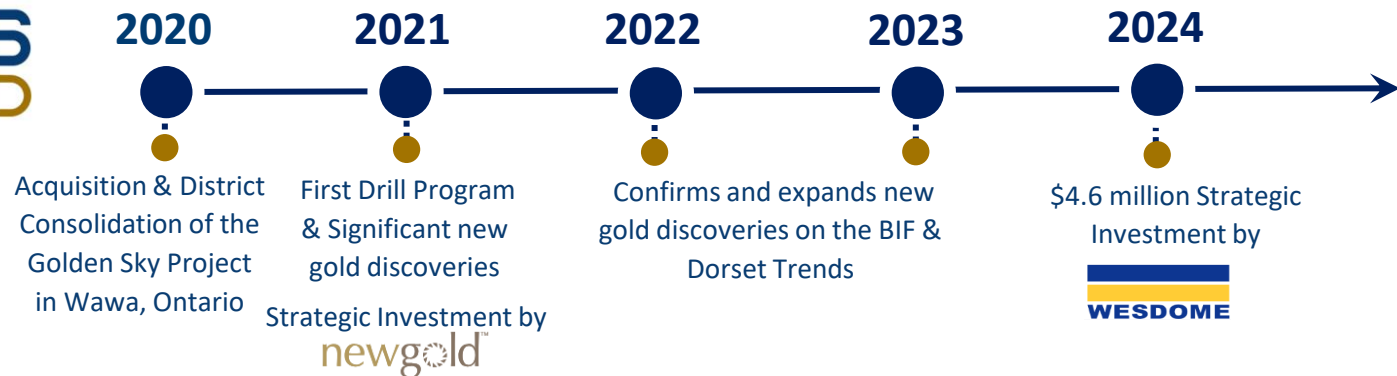
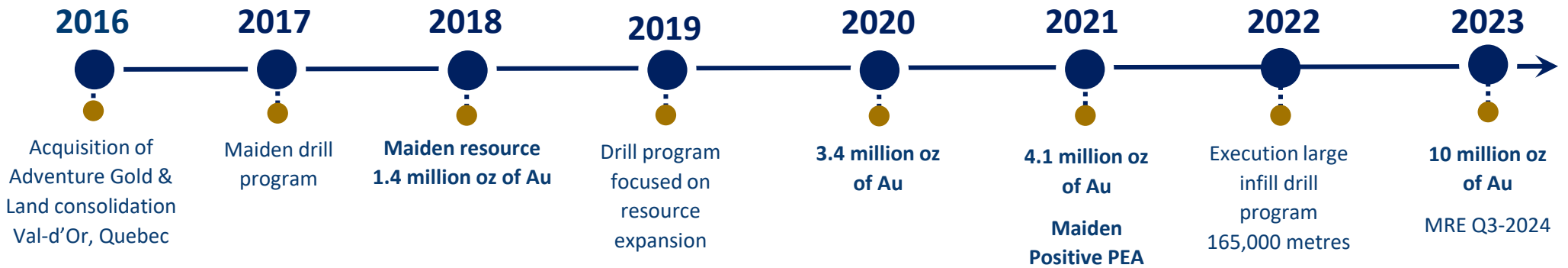
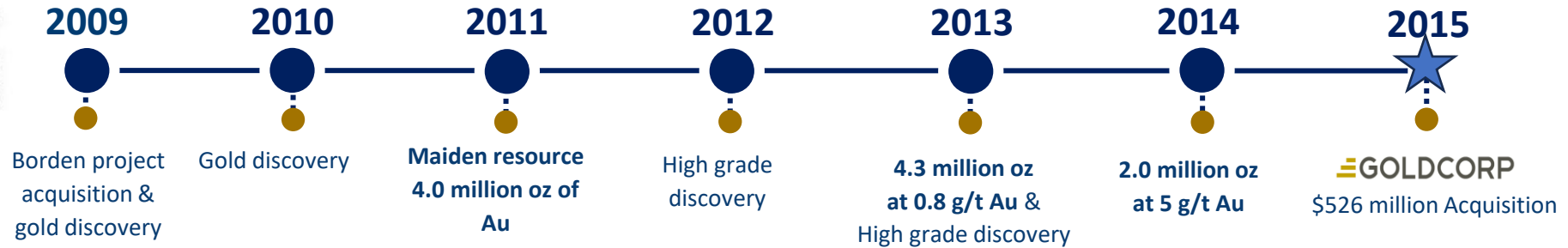
## Lindsay Dunlop

### VP Investor Relations

- 15+ years of experience in investor relations and corporate communications for publicly traded mining companies
- Former VP of Investor Relations with Wesdome Gold Mines and Director of Investor Relations at Kirkland Lake Gold Inc. prior to its acquisition by Agnico Eagle Mines

**Proven track record of creating value through discoveries & responsible for numerous successful M&A transactions**

# Proven Track Record of Success



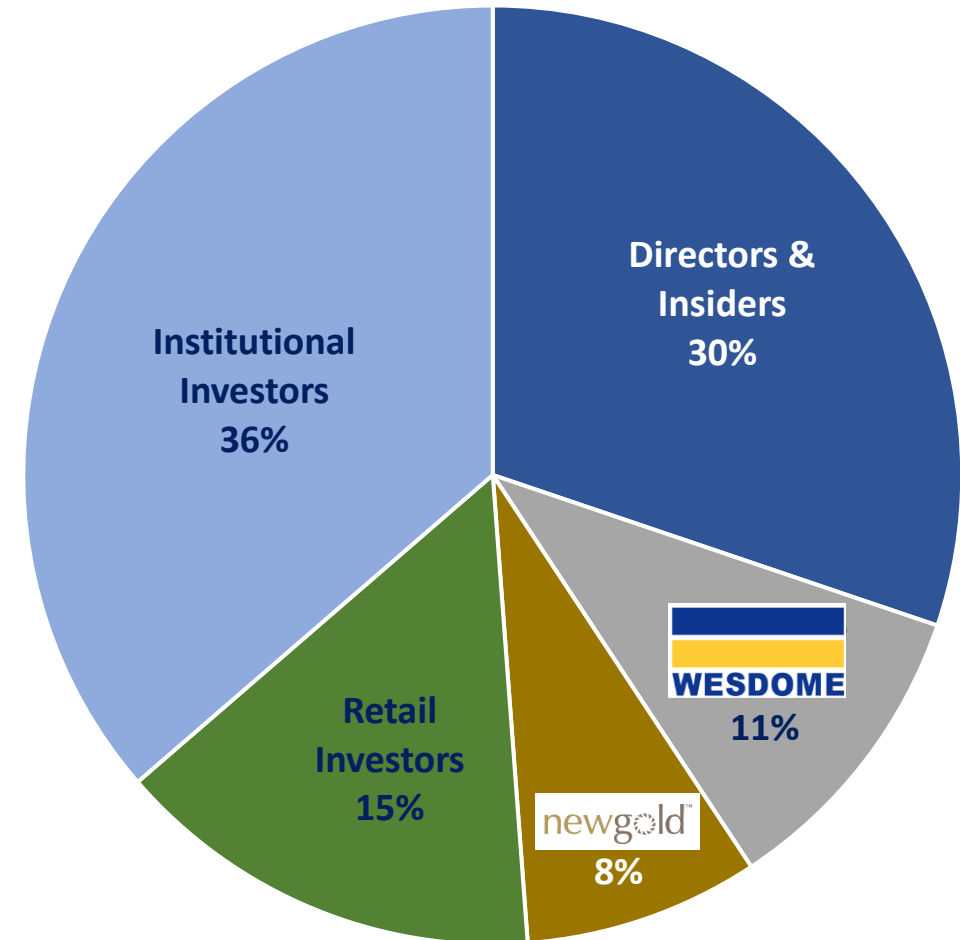
**Well-Positioned for continued resource expansion and project de-risking**

# Share Structure

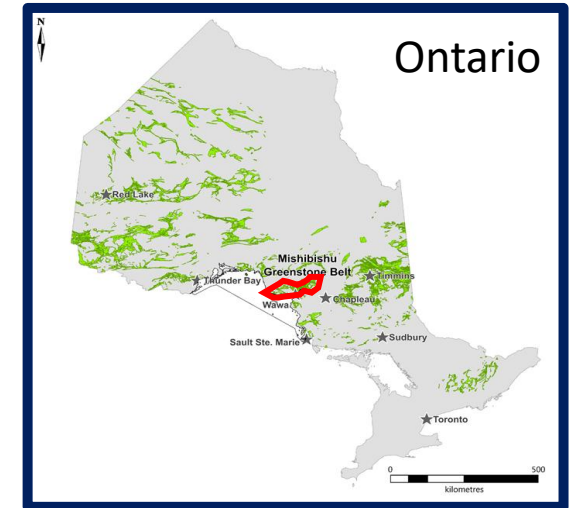
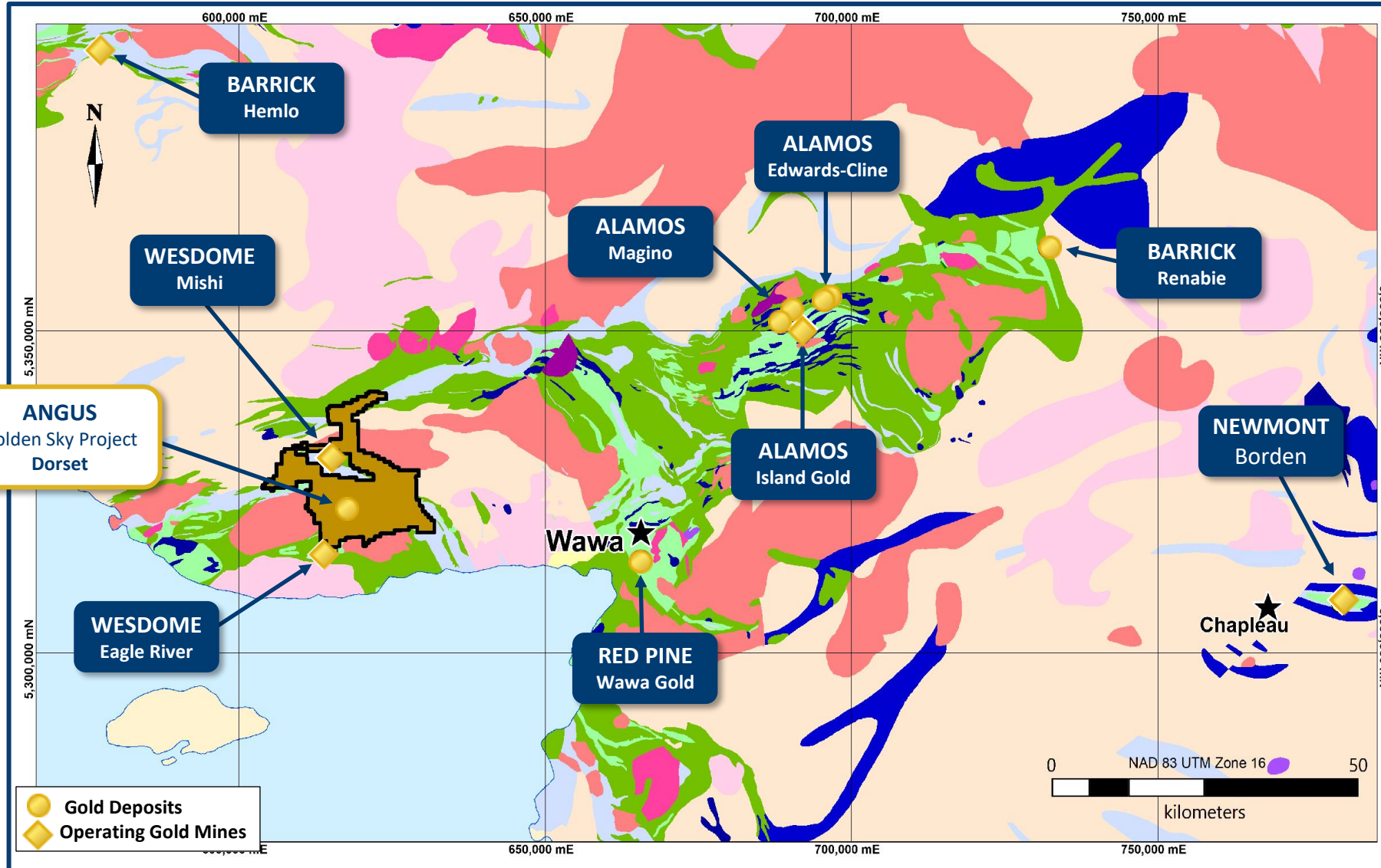
## November 2024

Share Price (C\$)	\$0.45
Shares Outstanding	59.9 million
Warrants	5.4 million
Options	5.1 million
Market Capitalization (C\$)	\$31.7 million
Cash (C\$)	\$8.0 million

**Well-funded & tightly held ownership with Management/Insiders 30%**



# Wawa Gold Camp – Proven District in Ontario, Canada



## Mishibishu Lake Greenstone Belt

Prolific Canadian greenstone belt 3 million ounces of gold produced to-date

One of fastest growing high grade gold districts in Canada

- ISLAND GOLD MINE – ALAMOS GOLD
- EAGLE RIVER MINE – WESDOME
- MAGINO MINE – ALAMOS GOLD

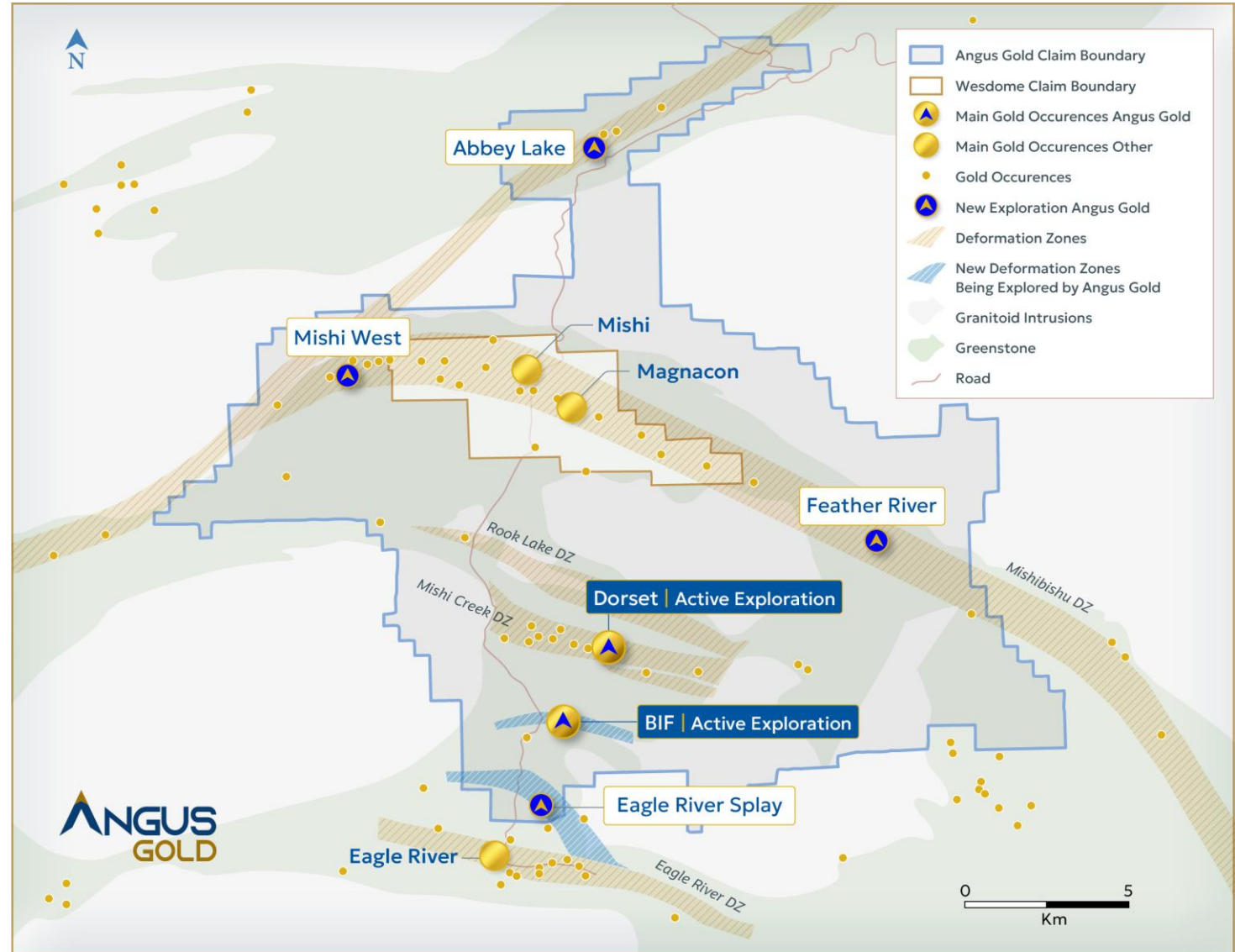
# Golden Sky Project: Under-Explored Gold Trends

- 7 km of strike length; Excellent exploration potential with existing gold resource on the Dorset trend

**DORSET DEPOSIT**  
 Historical Mineral Resources Estimate  
 Indicated 40,000 oz @ 1.4 g/t Au  
 Inferred 180,000 oz @ 1.2 g/t Au

- Multiple gold-hosting shear zones on the property
- Two new gold-bearing shear zones already identified by Angus' first exploration programs
- Three target areas currently being explored with drilling:
  - **BIF Zone**
  - **Dorset Zone**
  - **Eagle River Splay**
- New exploration targets being brought to drill-readiness: **Feather River, Abbey Lake, Mishi West**

**Angus ➡ Adding value by methodically evaluating & drilling this under-explored land package**

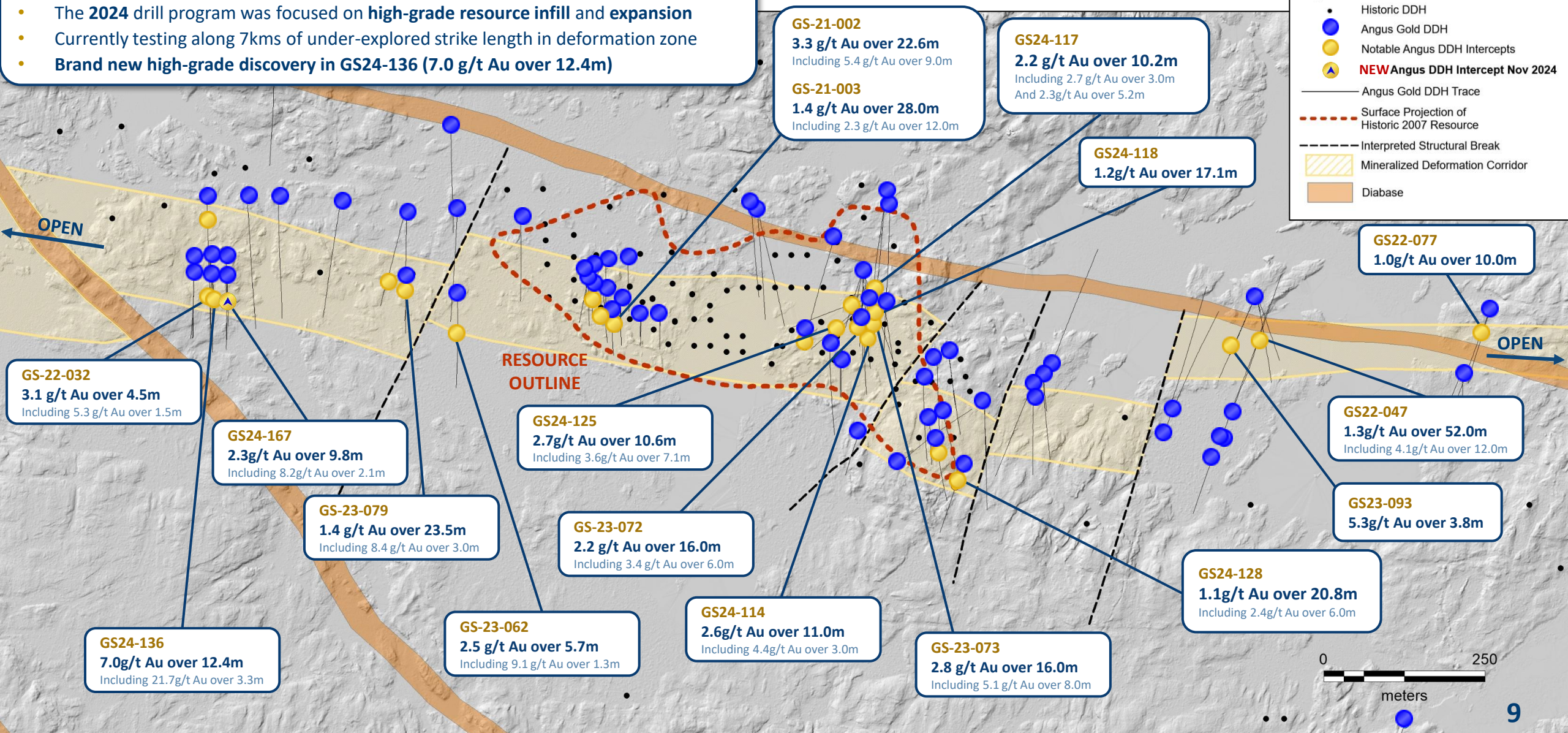




# Dorset Trend – Strike Extension of Mineralized Zone

## Dorset Highlights

- The **2024 drill program** was focused on **high-grade resource infill and expansion**
- Currently testing along 7kms of under-explored strike length in deformation zone
- **Brand new high-grade discovery in GS24-136 (7.0 g/t Au over 12.4m)**



**Legend**

- Historic DDH
- Angus Gold DDH
- Notable Angus DDH Intercepts
- ▲ NEW Angus DDH Intercept Nov 2024
- Angus Gold DDH Trace
- - - Surface Projection of Historic 2007 Resource
- - - Interpreted Structural Break
- ▨ Mineralized Deformation Corridor
- Diabase

**GS-21-002**  
**3.3 g/t Au over 22.6m**  
 Including 5.4 g/t Au over 9.0m

**GS-21-003**  
**1.4 g/t Au over 28.0m**  
 Including 2.3 g/t Au over 12.0m

**GS24-117**  
**2.2 g/t Au over 10.2m**  
 Including 2.7 g/t Au over 3.0m  
 And 2.3g/t Au over 5.2m

**GS24-118**  
**1.2g/t Au over 17.1m**

**GS22-077**  
**1.0g/t Au over 10.0m**

**GS-22-032**  
**3.1 g/t Au over 4.5m**  
 Including 5.3 g/t Au over 1.5m

**GS24-167**  
**2.3g/t Au over 9.8m**  
 Including 8.2g/t Au over 2.1m

**GS-23-079**  
**1.4 g/t Au over 23.5m**  
 Including 8.4 g/t Au over 3.0m

**GS24-125**  
**2.7g/t Au over 10.6m**  
 Including 3.6g/t Au over 7.1m

**GS-23-072**  
**2.2 g/t Au over 16.0m**  
 Including 3.4 g/t Au over 6.0m

**GS22-047**  
**1.3g/t Au over 52.0m**  
 Including 4.1g/t Au over 12.0m

**GS23-093**  
**5.3g/t Au over 3.8m**

**GS24-136**  
**7.0g/t Au over 12.4m**  
 Including 21.7g/t Au over 3.3m

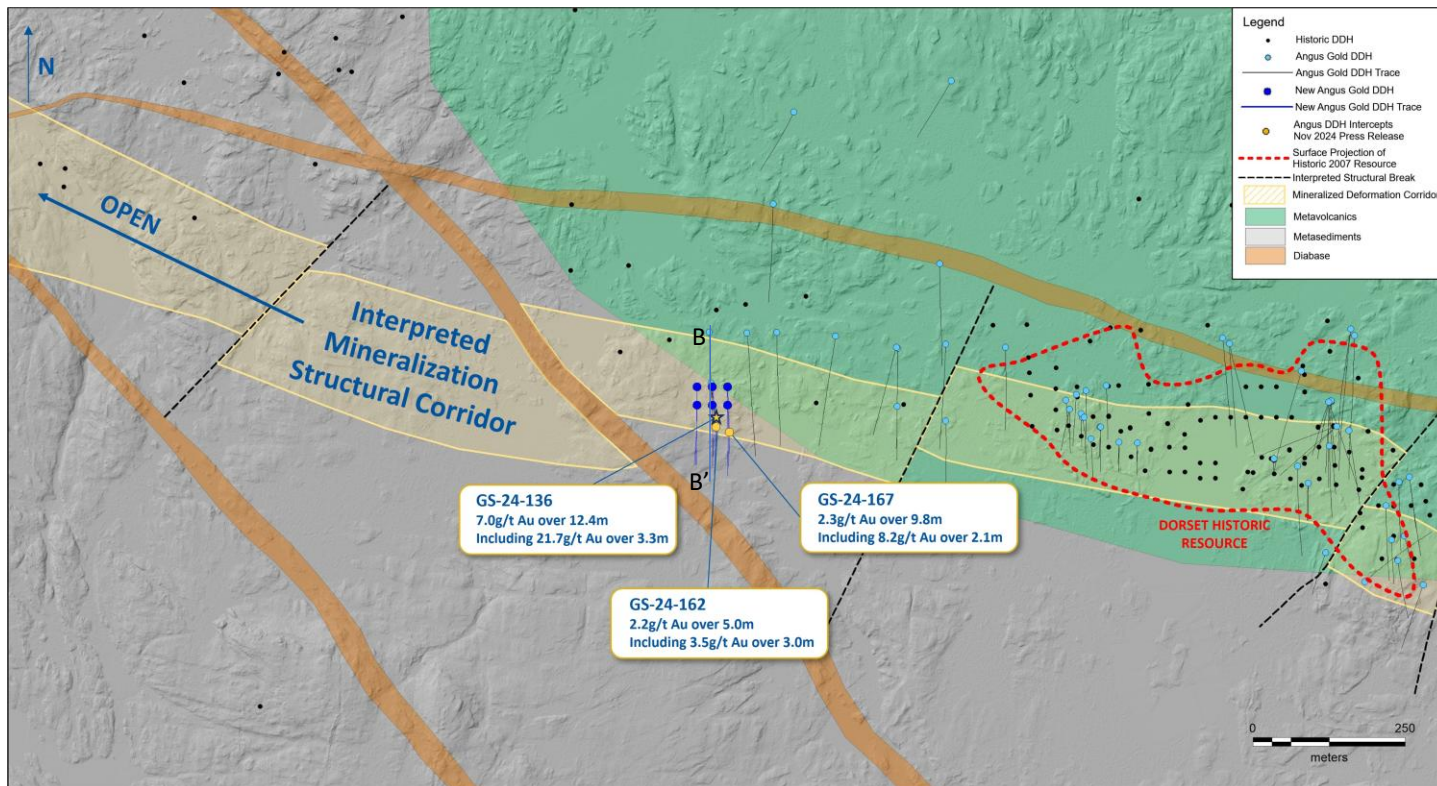
**GS-23-062**  
**2.5 g/t Au over 5.7m**  
 Including 9.1 g/t Au over 1.3m

**GS24-114**  
**2.6g/t Au over 11.0m**  
 Including 4.4g/t Au over 3.0m

**GS-23-073**  
**2.8 g/t Au over 16.0m**  
 Including 5.1 g/t Au over 8.0m

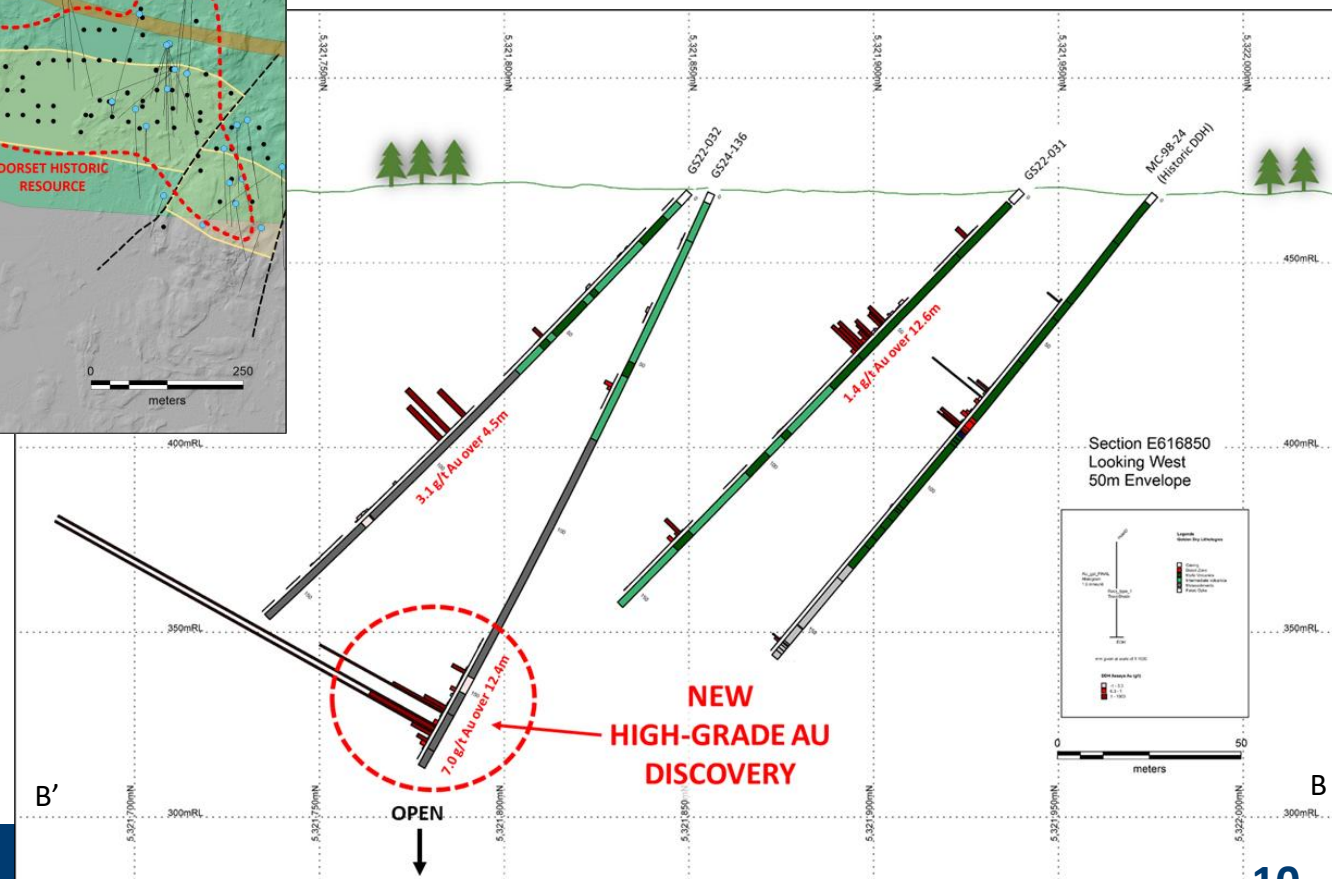
**GS24-128**  
**1.1g/t Au over 20.8m**  
 Including 2.4g/t Au over 6.0m

# Dorset Trend – New High-Grade Discovery



DDH	From	To	Length (m)	Au (g/t)
GS-24-136	145.4	146.4	1.0	1.3
GS-24-136	156.40	168.8	12.4	7.0
including	156.4	158.7	2.3	5.4
including	162.3	165.6	3.3	21.7

- Angus has made a brand-new **high-grade gold discovery**, 500m west of the historic Dorset resource
- The interpreted exploration trend of GS24-136 is completely **open along strike and at depth** – no drilling to the West to date
- **Multiple intersection points in new high-grade zone** – working on understanding orientation of veins hosting Au mineralization

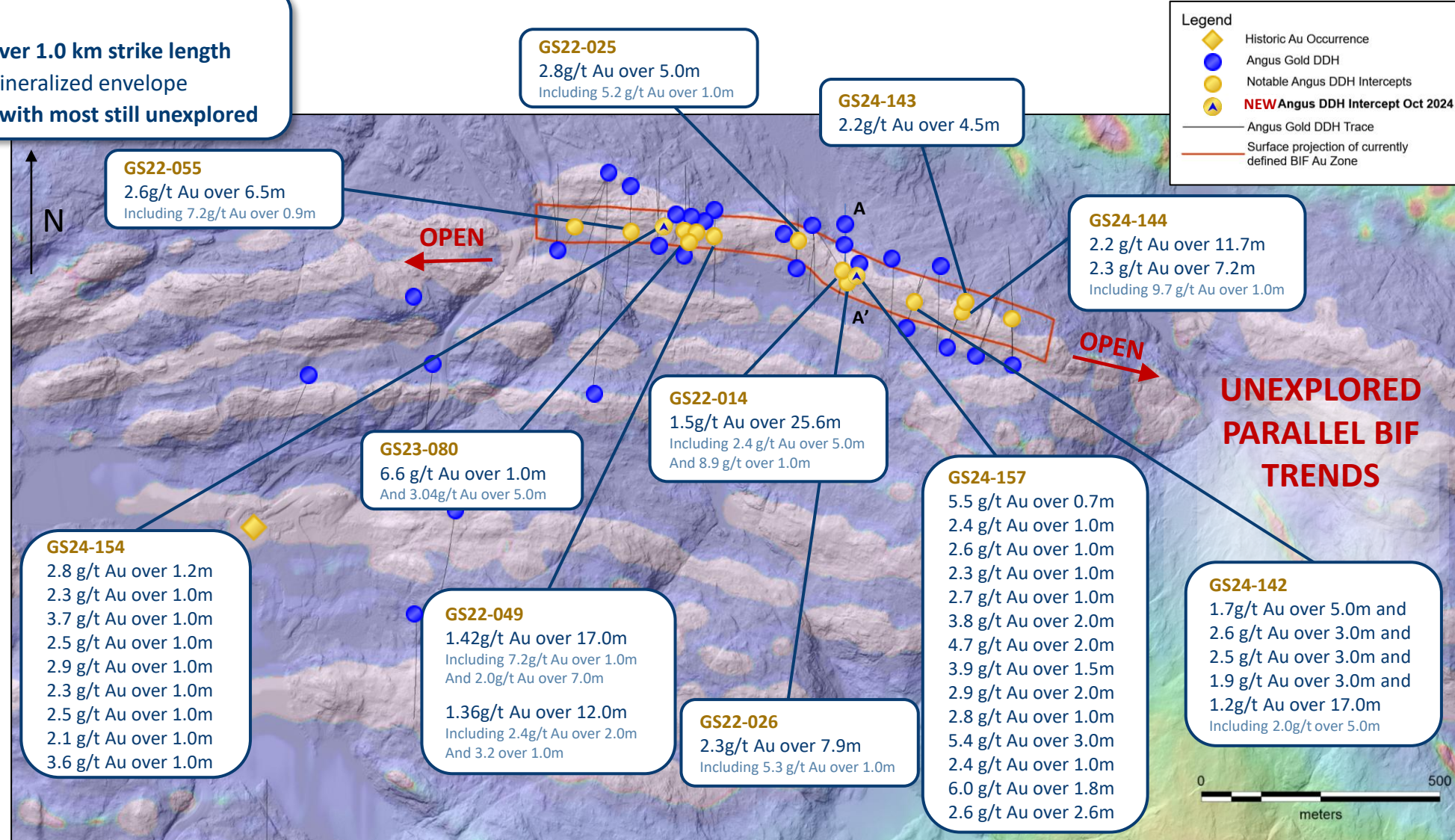


# BIF Discovery – Results Confirm Extensive Gold System

## BIF Highlights

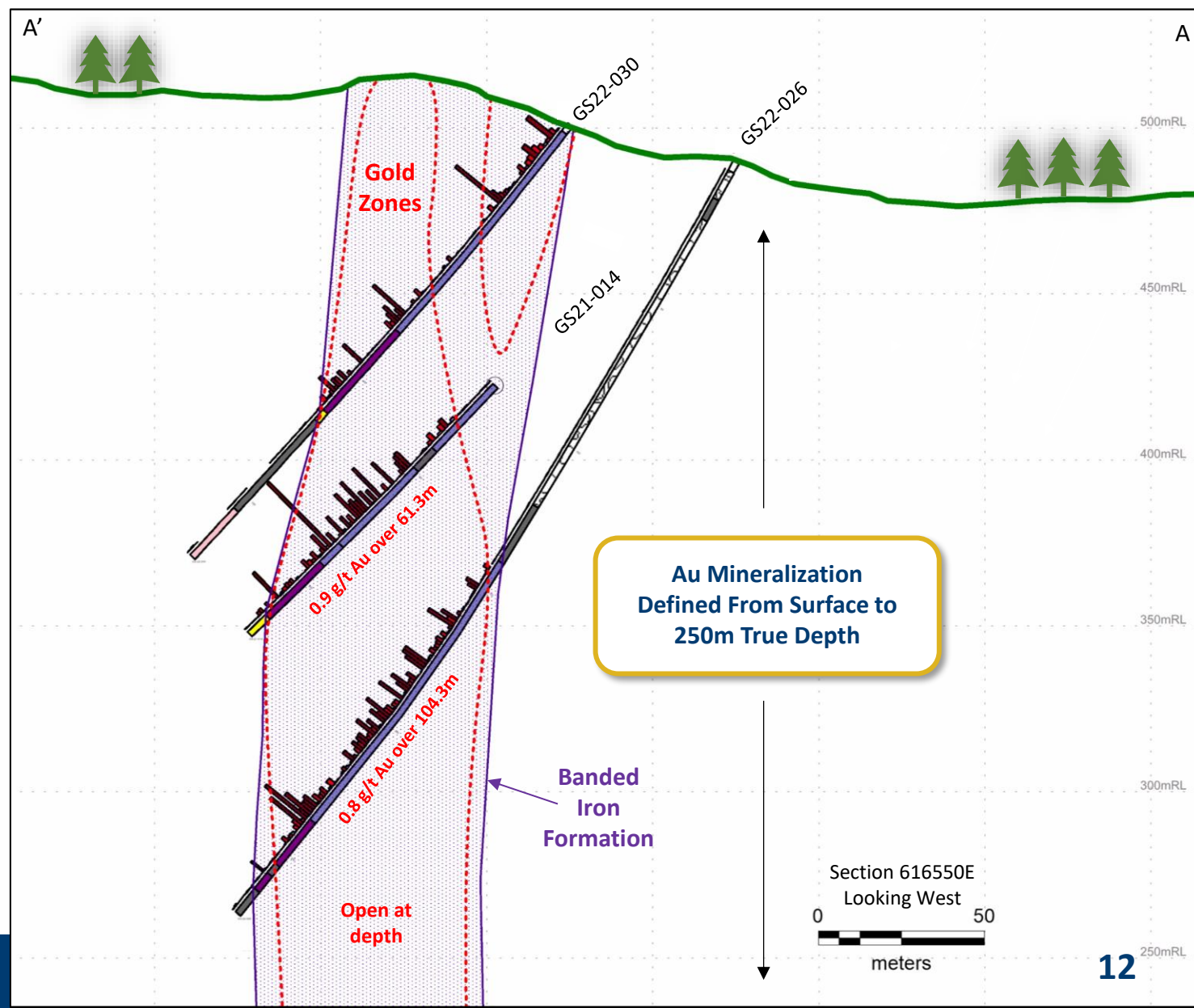
- Drilling has confirmed **Gold Horizon over 1.0 km strike length**
- **High-grade intercepts** within board mineralized envelope
- **BIF extends for 6kms of strike length with most still unexplored**

Hole	Consistent Broad Low-Grade Intercepts
GS21-14	0.9 g/t Au over 61.3 m
GS21-15	1.0 g/t Au over 18.7 m
GS22-26	0.8 g/t Au over 104.3 m
GS22-46	1.0 g/t Au over 22.0 m
GS22-49	1.0 g/t Au over 49.0 m
GS22-55	1.0 g/t Au over 45.5 m
GS23-80	1.0 g/t Au over 61.3 m
GS24-142	0.9 g/t Au over 42.2 m
GS24-143	1.0 g/t Au over 25.0 m
GS24-144	1.1 g/t Au over 47.4 m
GS24-157	1.0 g/t Au over 111.0 m; 1.0 g/t over 12.0m



# BIF Discovery – Results Confirms Extensive Gold System

- Thick consistent zones of mineralization
- Au mineralization defined from surface to 250m true depth
- Mineralized zone is roughly subvertical
- Mineralized zone open at depth and along strike



# BIF Hosted Gold Deposits

## Why are BIF hosted gold deposits attractive exploration targets?

- Multimillion ounce potential
- High-grade
- Extensive systems

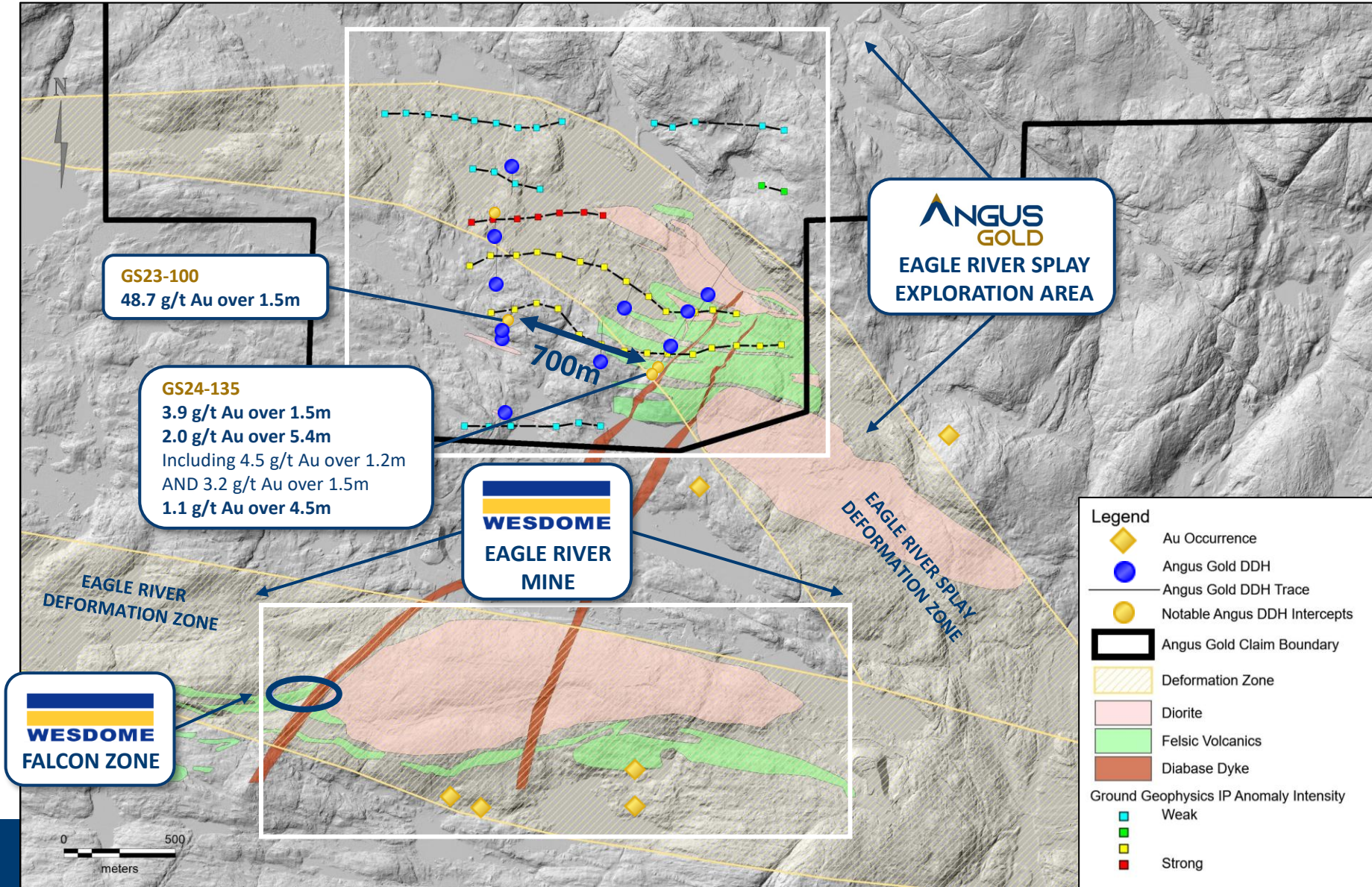
## Notable BIF Hosted Gold Deposits

Deposit	Company	Size	Average Grade
Homestake	Barrick	+42 Moz	~ 8.0 g/t
Meliadine	Agnico Eagle	+6 Moz	~ 6.0 g/t
Musselwhite	Newmont	+6 Moz	~ 5.5 g/t
Back River	B2 Gold	+6 Moz	~ 6.0 g/t
Greenstone	Equinox Gold	+6 Moz	~ 1.3 g/t



# Eagle River Splay Exploration Area

- **NEW DISCOVERY** at the Eagle River Splay Deformation Zone that is host to Wesdome's Eagle River Mine
- Two holes, drilled **700m apart**, testing the same IP trend that is associated with an interpreted contact between felsic and mafic volcanic rock units
- **GS23-100 - 48.7 g/t Au over 1.5m**
- **GS24-135 – 2.0 g/t Au over 5.4m including 4.5g/t Au over 1.2m AND 3.2g/t Au over 1.5m**
- Numerous historic surface samples **> 5 g/t Au** were collected in the exploration area
- **No historical drilling** has been completed in this area



# Golden Sky Project: Under-Explored Gold Trends

## BIF

- New Discovery
- Already defined 1km of strike length
- Generated new interpretations of Au mineralization controls

## Dorset

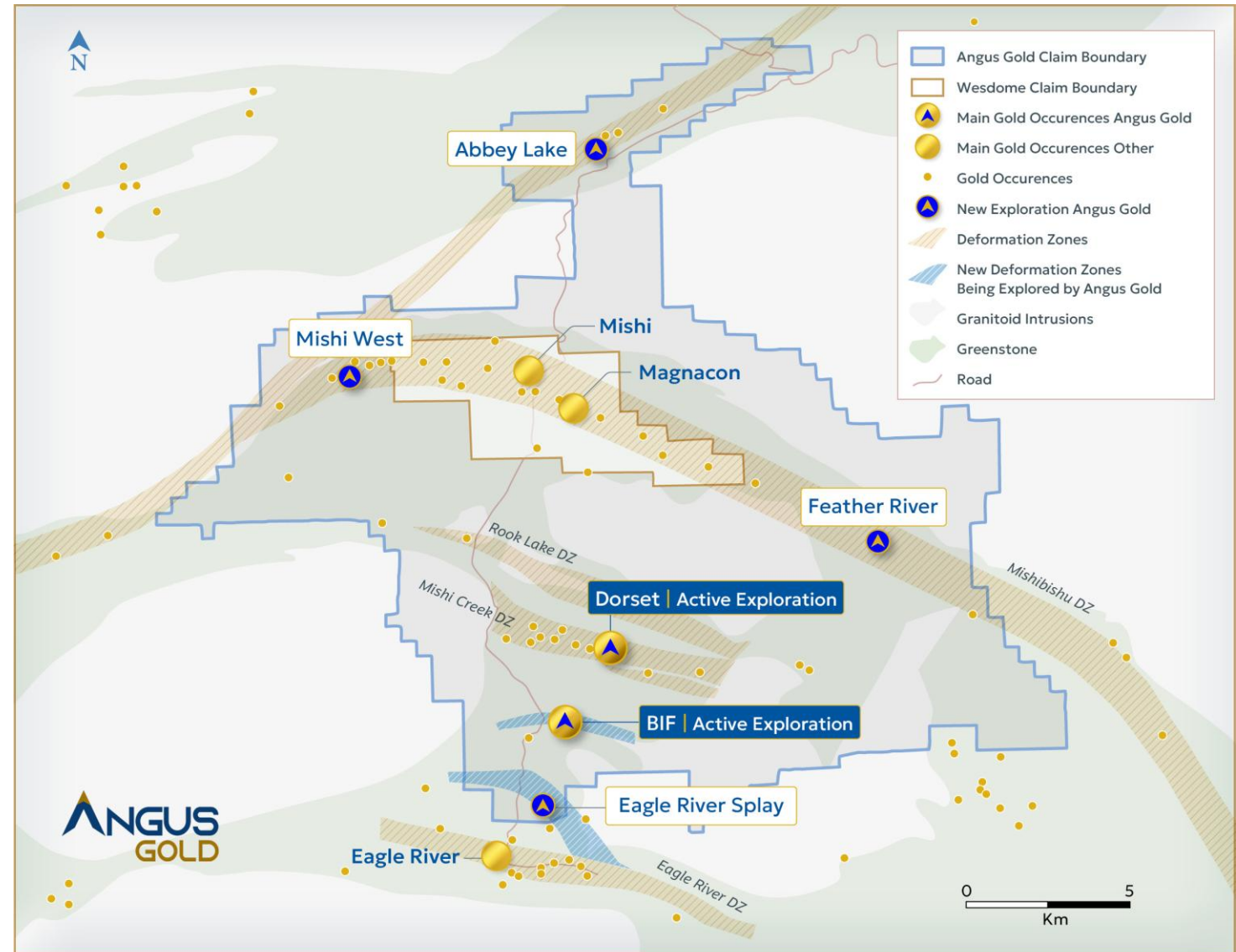
- Expanded strike length of the existing resource
- Targeting high-grade material
- **Brand-new high-grade Au** intersection along most western section of Dorset Zone – trend is open for 2kms to the west

## Eagle River Splay

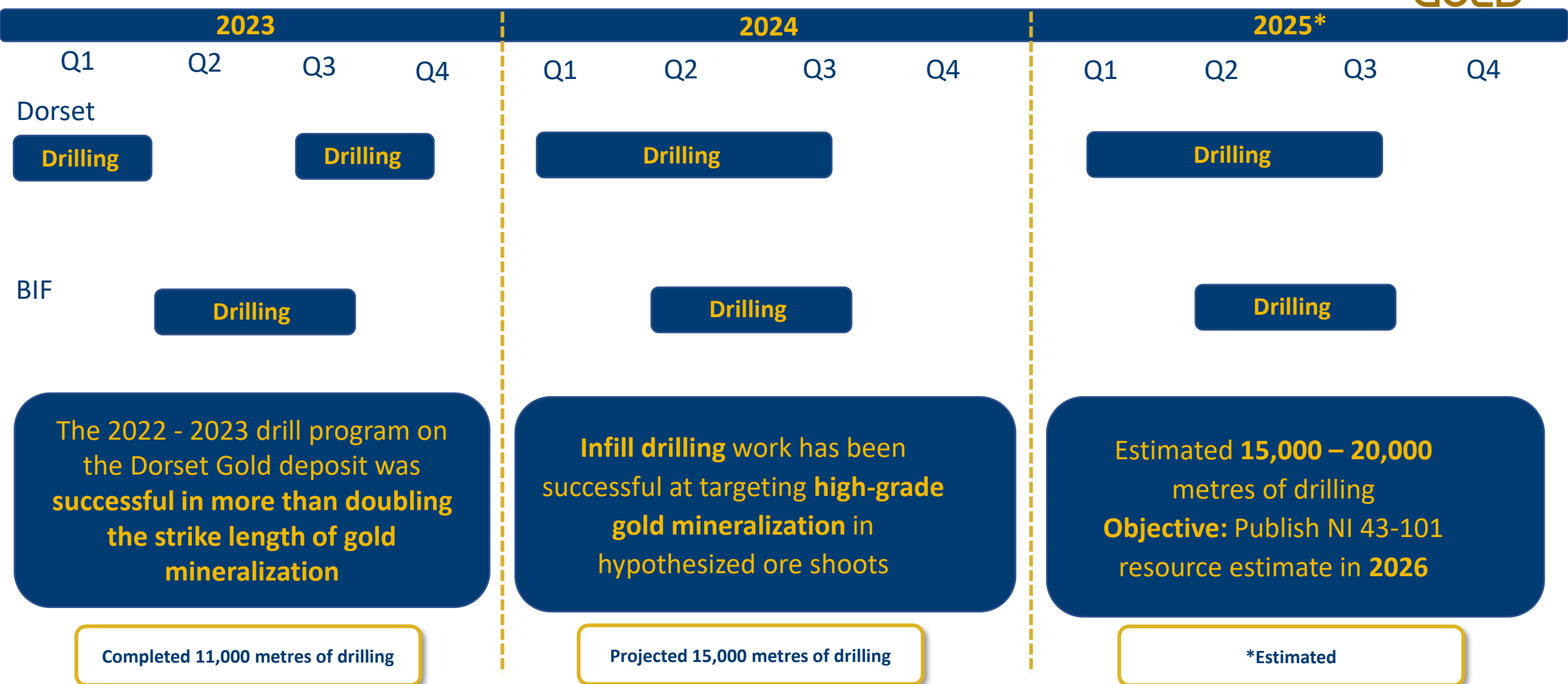
- Identified unexplored shear zone
- Potential extension of the geologic host of Wesdome's Eagle River Mine
- Generated new exploration targets
- **New high-grade Au Discovery** in inaugural drill program

## Feather River

- Identified under explored portion of gold-hosting shear zone
- Currently generating new exploration targets



# Golden Sky – Project Path and Future







## HEAD OFFICE

110 Yonge Street, Suite 1601  
Toronto, Ontario M5C 1T4  
Email: [info@angusgold.com](mailto:info@angusgold.com)

angusgold.com  
TSX-V: GUS  
OTCQB: ANGVF

Follow and join our email list

[\*Subscribe Now\*](#)

# APPENDIX

# Golden Sky Project: Consolidation Strategy

**Consolidated 290 km<sup>2</sup> of under-explored property next to Eagle River Mine of Wesdome Gold**

## February 2020:

- Closed the acquisition of IAMGOLD claims
- Completed the acquisition of Exiro's claims

## March 2020:

- Closed the acquisition of Talisker's claims (Dorset & Alexandria)
- Staked 437 mining claims

**May 2020:** Completed the acquisition of Metalcorp & Healey claims

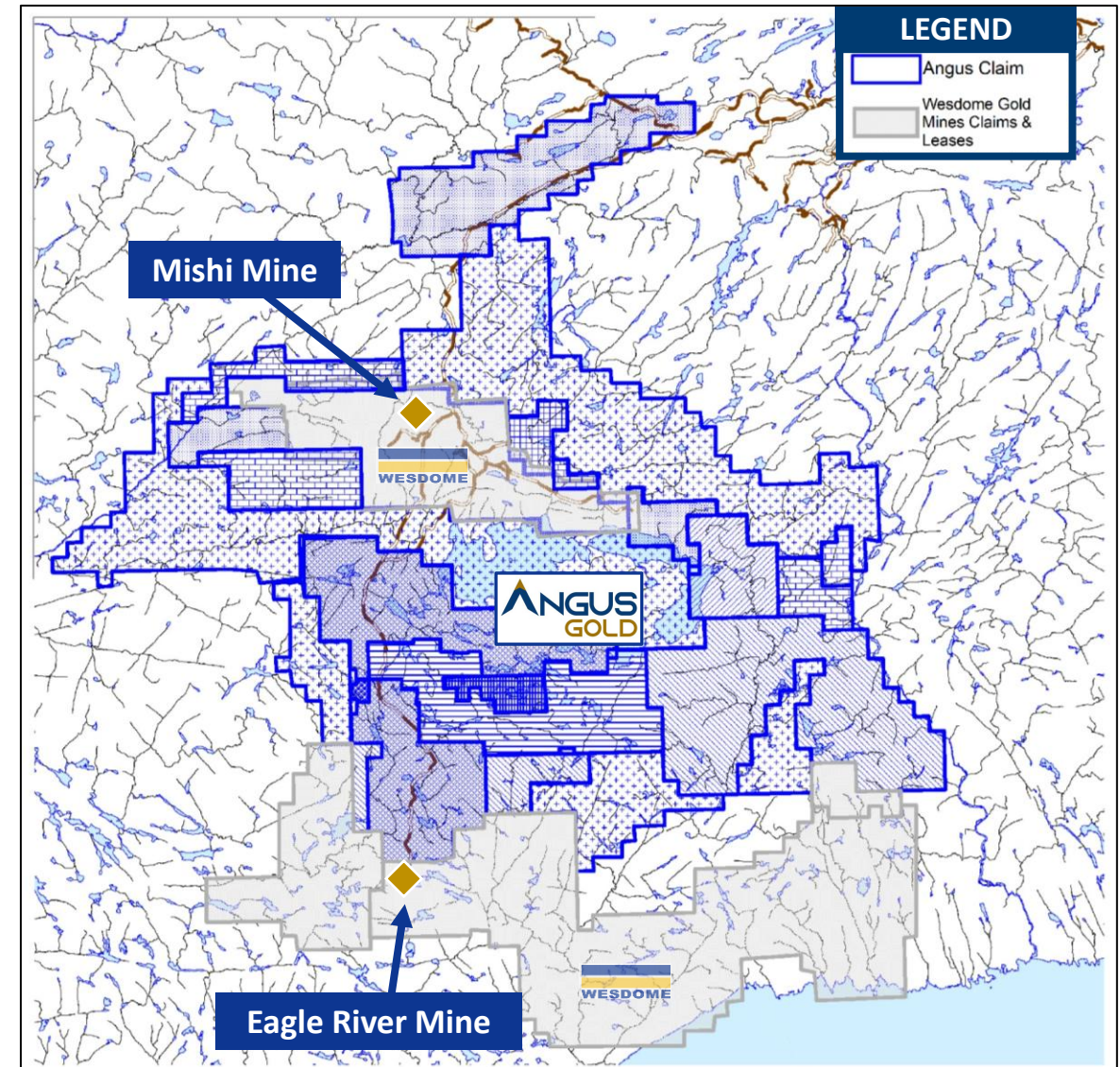
**July 2020:** Completed the acquisition of Precambrian claims

**November 2020:** Closed the acquisition of 3 properties from Argo Gold

**February – April 2022:** Completed the acquisition of 8 mining claims and staked an additional 50 claims

**January 2023:** Completed 100% earn-in in the IAMGOLD claims – Mishi property

**Spring – Fall 2023:** Angus map staked additional ground



# Golden Sky Exploration Camp



- Exploration camp on site to increase productivity and reduce cost
- 24 person camp capacity
- Ability to expand for future programs